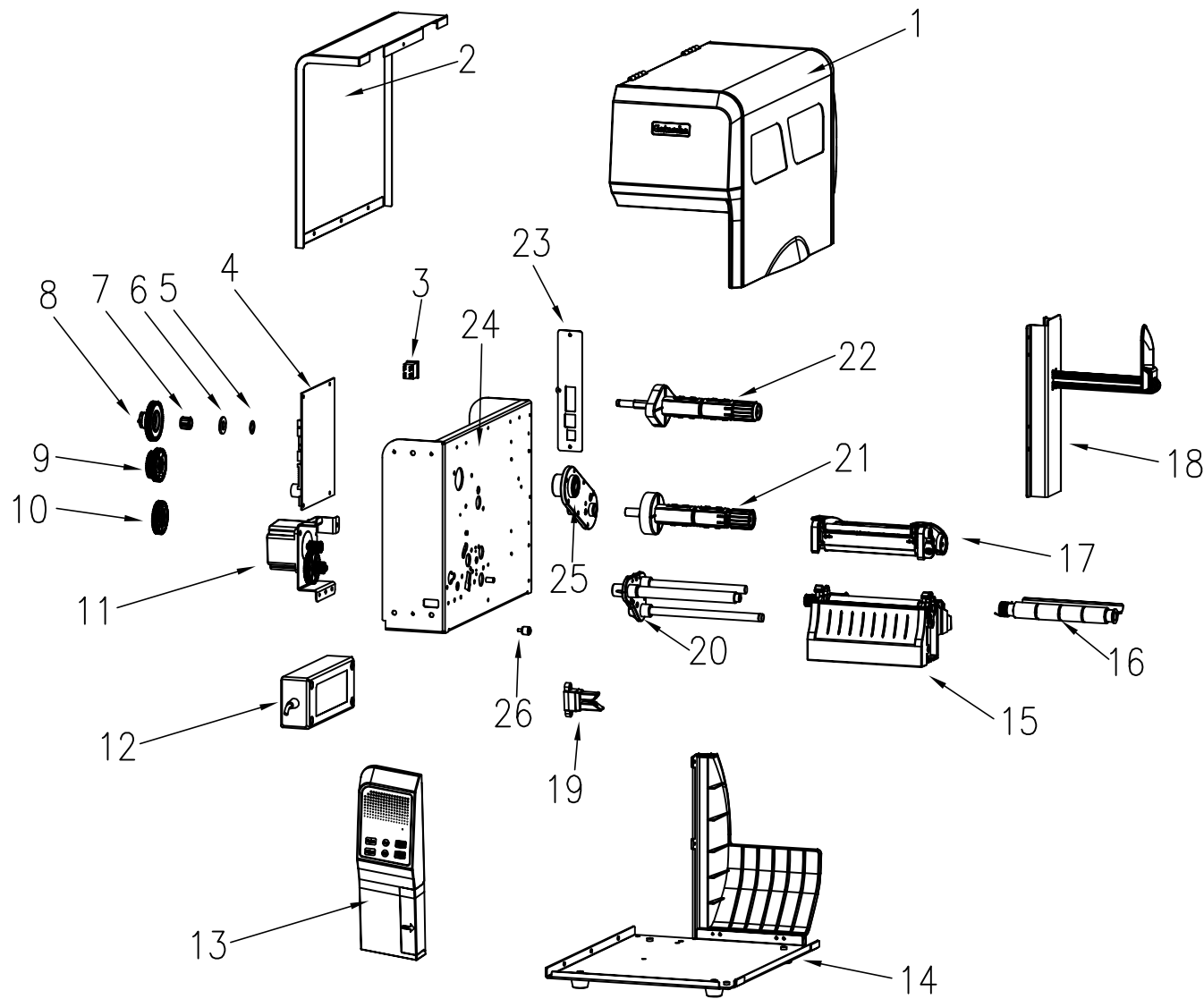
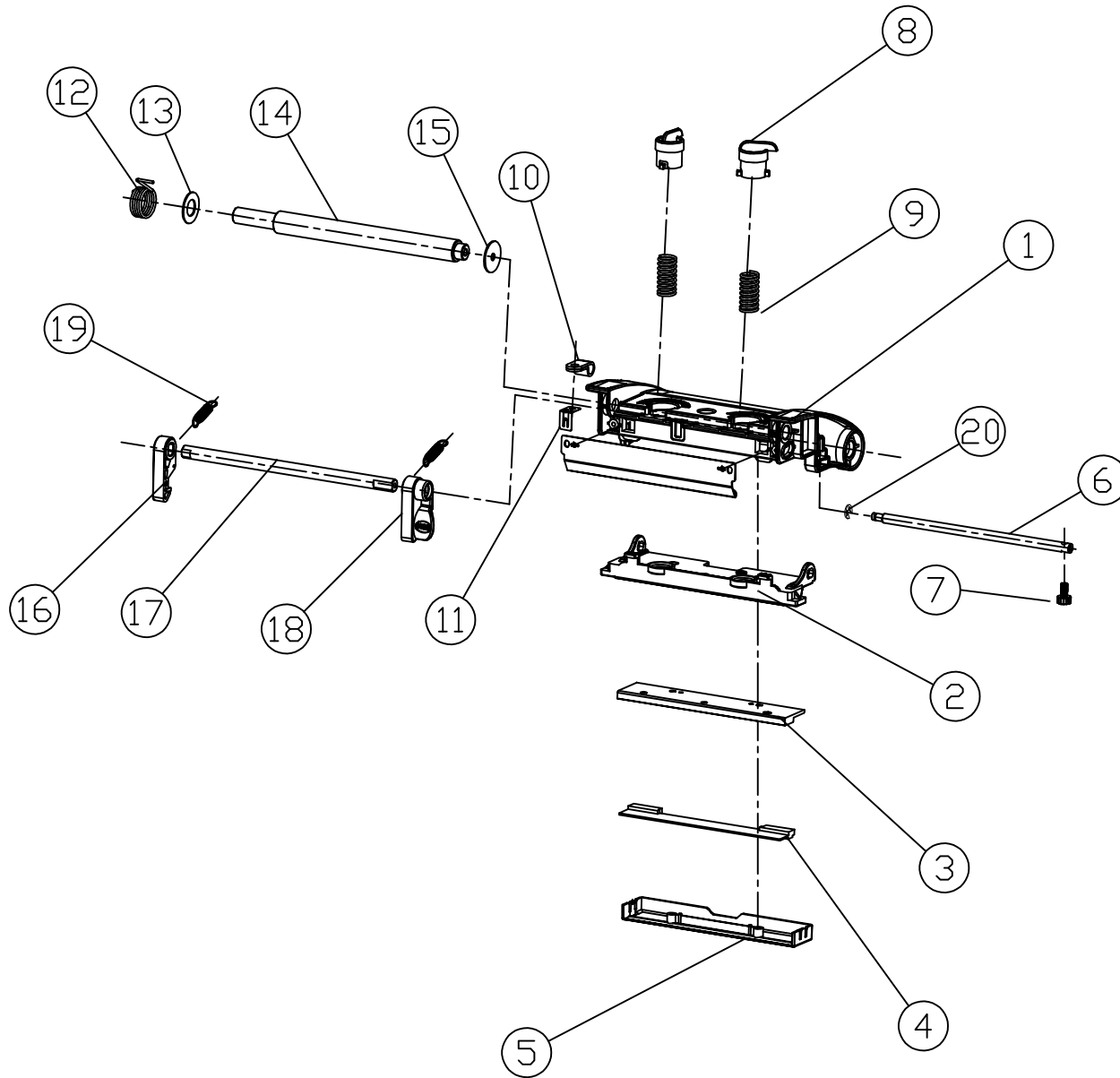


# Industrial Exploded View (Button)



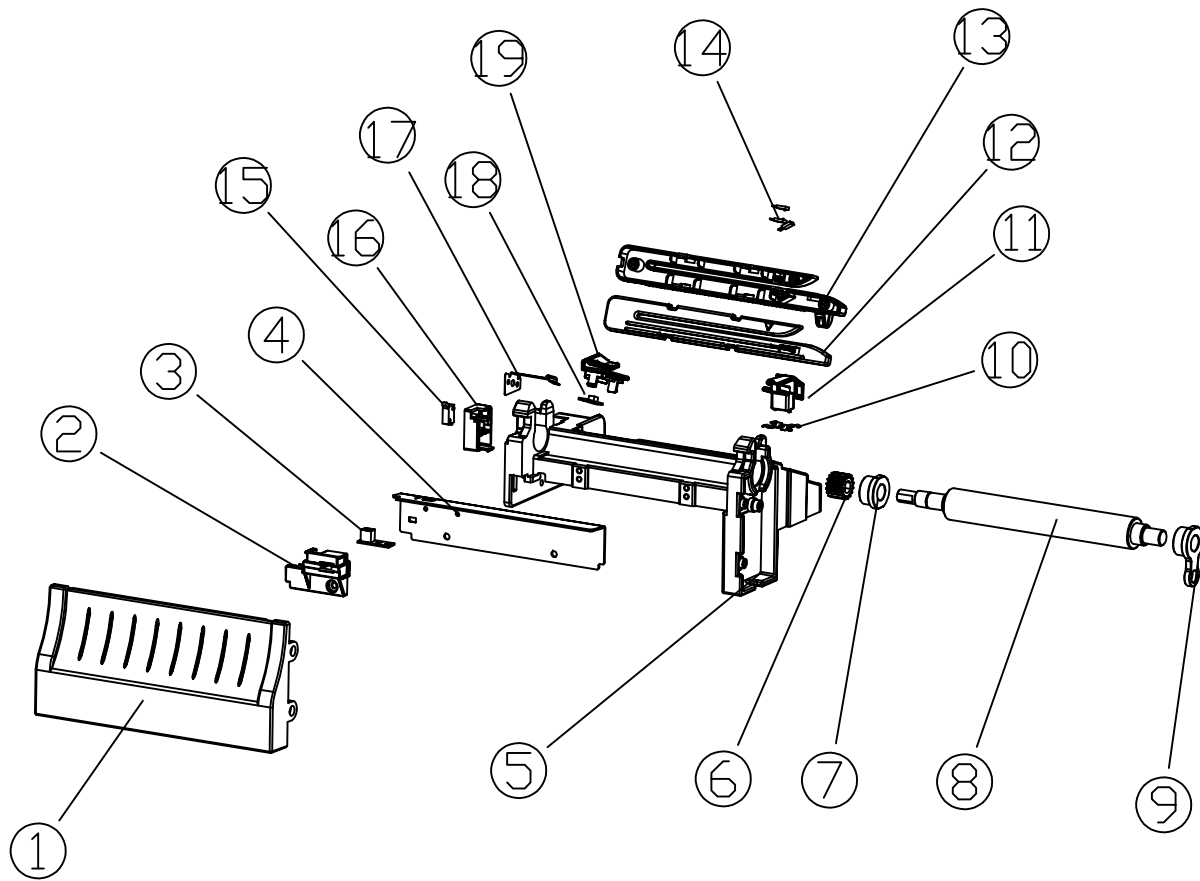
Serial Number	Material Code	Material Name	Quantity
1		Right Flip Assembly	1
2	1.22.13.01400	Left Flip Cover	1
3	1.09.02.00007	Switch	1
4	2.03.01.00010	Motherboard	1
5	1.24.04.00017	Flad Pad	1
6	1.27.05.00306	Nylon Gasket	1
7	1.24.02.00005	One-way Bearings	1
8	1.25.01.00079	Recycle Gear	1
9	1.25.01.00078	Recycle Intermediate Gear	1
10	1.25.01.00077	Recycle Excessive Gear	1
11		Motor Assembly	1
12	1.16.00.00055	Power Adapter	1
13		Face Cover Assembly	1
14		Base Plate Assembly	1
15		Base Assembly	1
16		Pressure Plate Assembly	1
17		Print Assembly	1
18		Loading Paper Assembly	1
19		Penetration Reflection Assembly	1
20		Coupling Seat Assembly	1
21		Ribbon Supply Assembly	1
22		Ribbon Recycle Assembly	1
23	1.23.33.00110	Interface Baffle	1
24	1.22.13.01360	Support Plate	1
25	1.22.13.01520	Bearing Seat	1
26	1.24.01.00183	Adjustment Screws	1

# Print Head Assembly

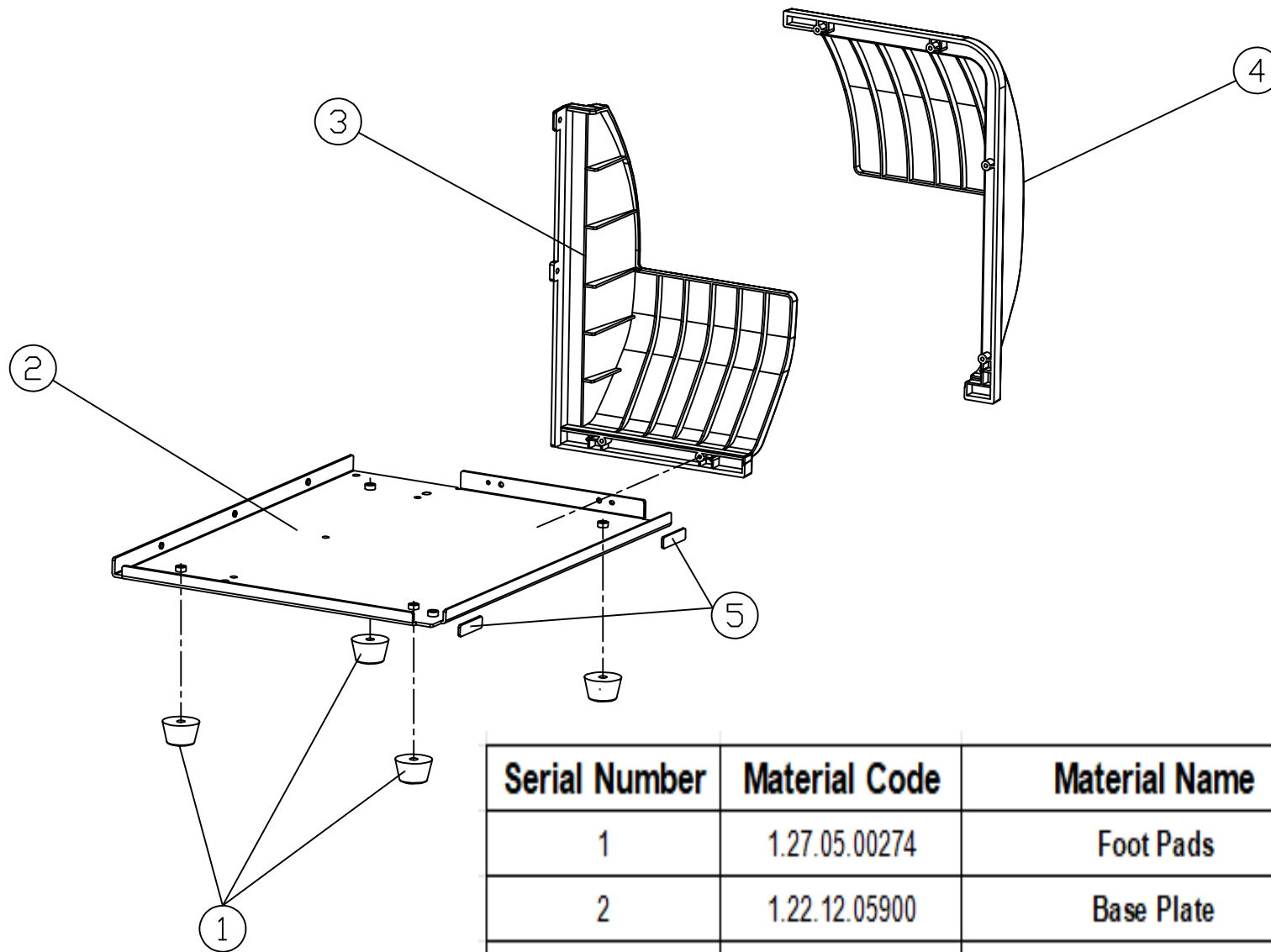


Serial Number	Material Code	Material Name	Quantity
1	1.22.13.01130	Ribbon Machine Base	1
2	1.22.13.01520	Bearing Flange Set	1
3	1.22.13.01580	Aluminum Strip	1
4	1.21.34.00001	Thermal Film	1
5	1.22.13.01240	Paper Feed Guide Block	1
6	1.22.12.05910	Adjustable TPH Shaft	1
7	1.24.01.00183	Adjustable Screws	1
8	1.22.33.00900	Elastic Adjustment Handle	2
9	1.23.13.00040	Print Head Spring	2
10	1.27.05.00276	R-type Cable Management Clip	1
11	1.22.12.05920	Grounding Shrapnel	1
12	1.23.13.00030	Rotary Hook Tension Spring	1
13	1.24.04.00016	Flat Pad	1
14	1.22.13.01610	Rotary Hook Shaft	1
15	1.24.04.00018	Flat Pad	1
16	1.22.33.00880	Rotary Hook L	1
17	1.22.13.01610	Rotary Hook Shaft	1
18	1.22.33.00890	Rotary Hook R	1
19	1.23.13.00030	Extension Spring	2
20	1.24.04.00009	Circlip	1

# Machine Base Assembly



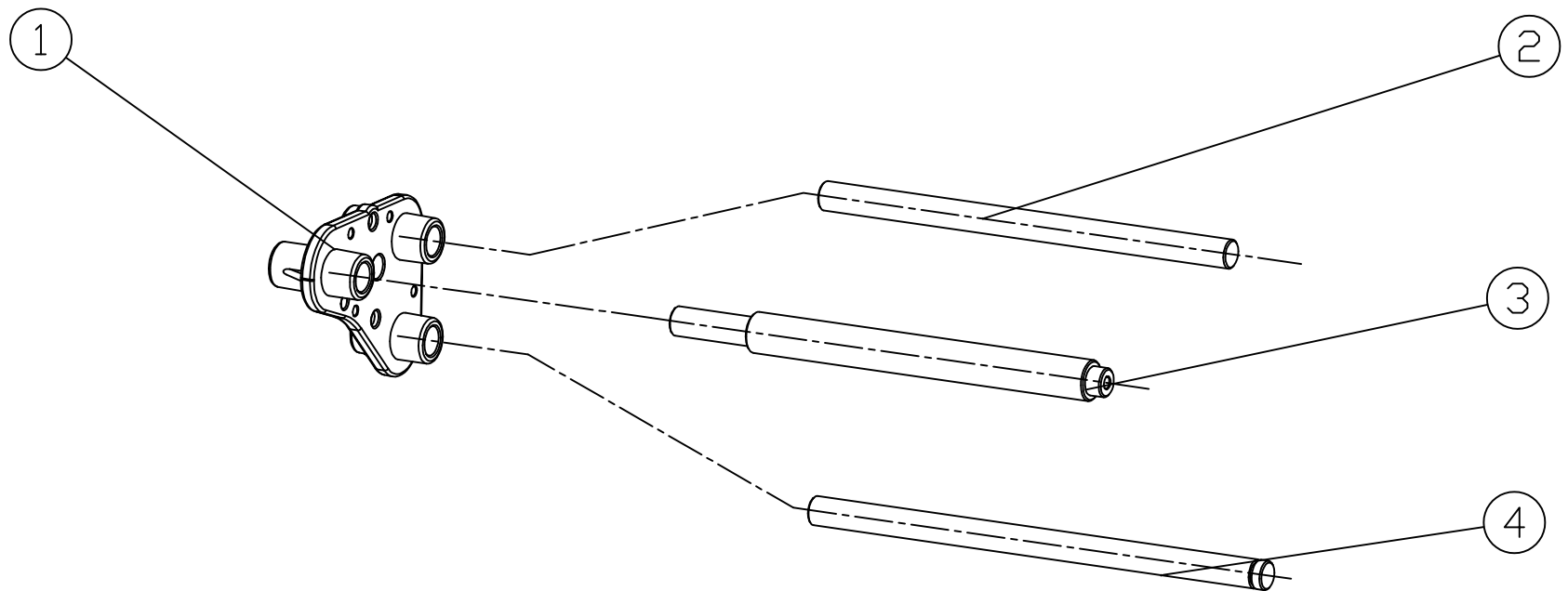
Serial Number	Material Code	Material Name	Quantity
1	1.22.13.01090	Bottom Cover	1
2	1.22.13.01270	Cover Plate	1
3	1.06.07.00002	Paper Sensor	1
4	1.22.13.01440	Ribbon Balance Board	1
5	1.22.13.01500	Print Head Bracket	1
6	1.25.01.00075	Rubber Roller Gear	1
7	1.22.13.01550	Rubber Roller Sleeve L	1
8	1.22.13.01570	Rubber Roller	1
9	1.22.13.01560	Rubber Roller Sleeve R	1
10	1.22.12.05920	Grounding Shrapnel	1
11	1.22.13.01530	Paper Clip R	1
12	1.22.33.00910	Gap Sensor Upper Cover	1
13	1.22.33.00920	Gap Sensor Lower Cover	1
14	2.03.05.00105	Gap Sensor	1
15	1.09.03.00006	Micro Switch	1
16	1.22.13.01260	Switch Cover	1
17	1.22.13.01460	Sensor Shrapnel	1
18	1.06.17.00016	Photoelectric Sensor	1
19	1.22.13.01280	Paper Clip L	1



Serial Number	Material Code	Material Name	Quantity
1	1.27.05.00274	Foot Pads	4
2	1.22.12.05900	Base Plate	1
3	1.22.13.01110	Paper Bin Bottom Cover	1
4	1.22.13.01100	Paper Bin Upper Cover	1
5	1.27.05.00275	Anti-collision Foam	2

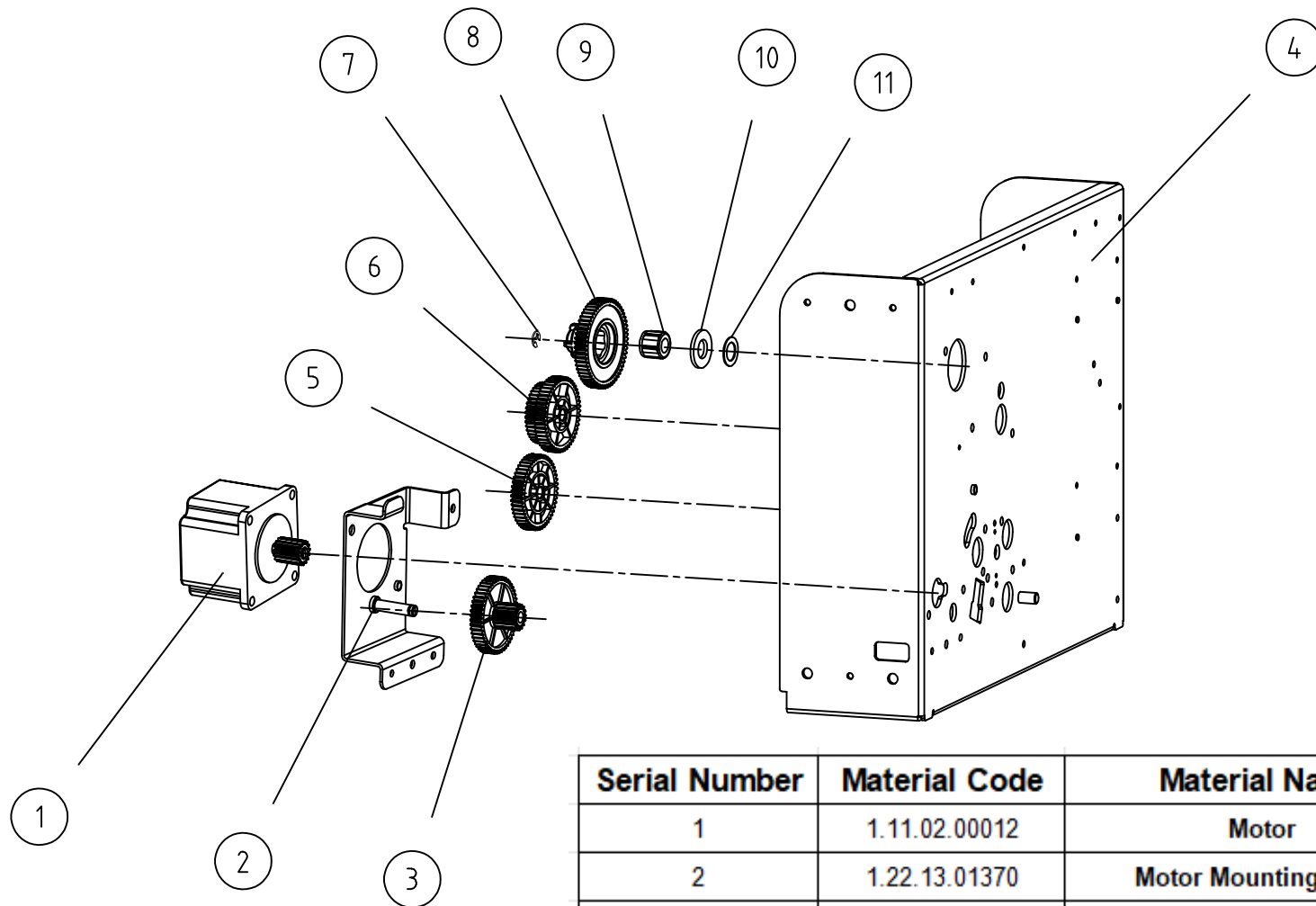
Base Board Assembly

Coupling Seat Assembly



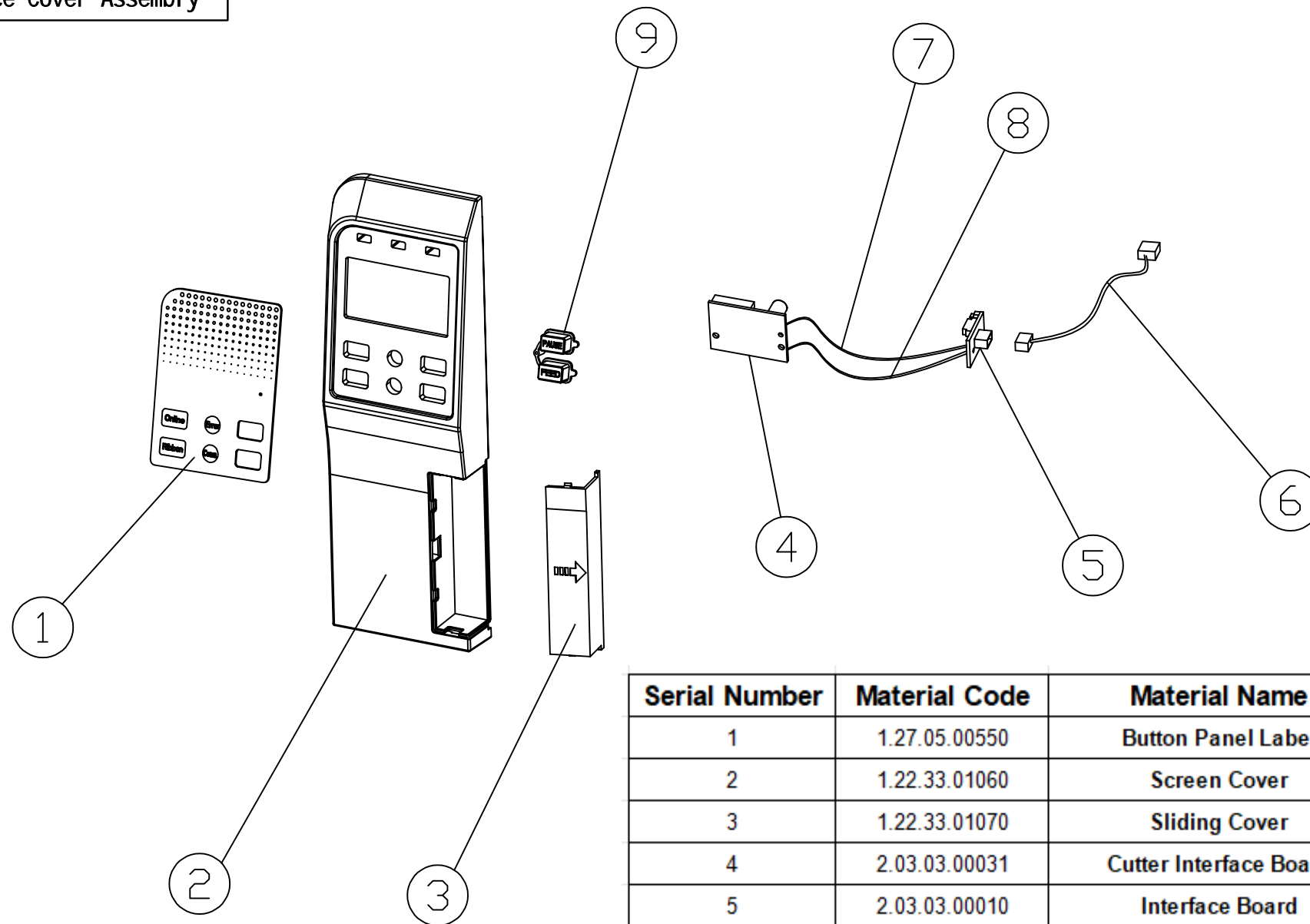
Serial Number	Material Code	Material Name	Quantity
1	1.22.13.01510	Coupling Seat	1
2	1.22.13.01620	Paper Feed Shaft	1
3	1.22.13.01600	Flip Cover Shaft	1
4	1.22.13.01630	Ribbon Guide Shaft	1

Motor Assembly



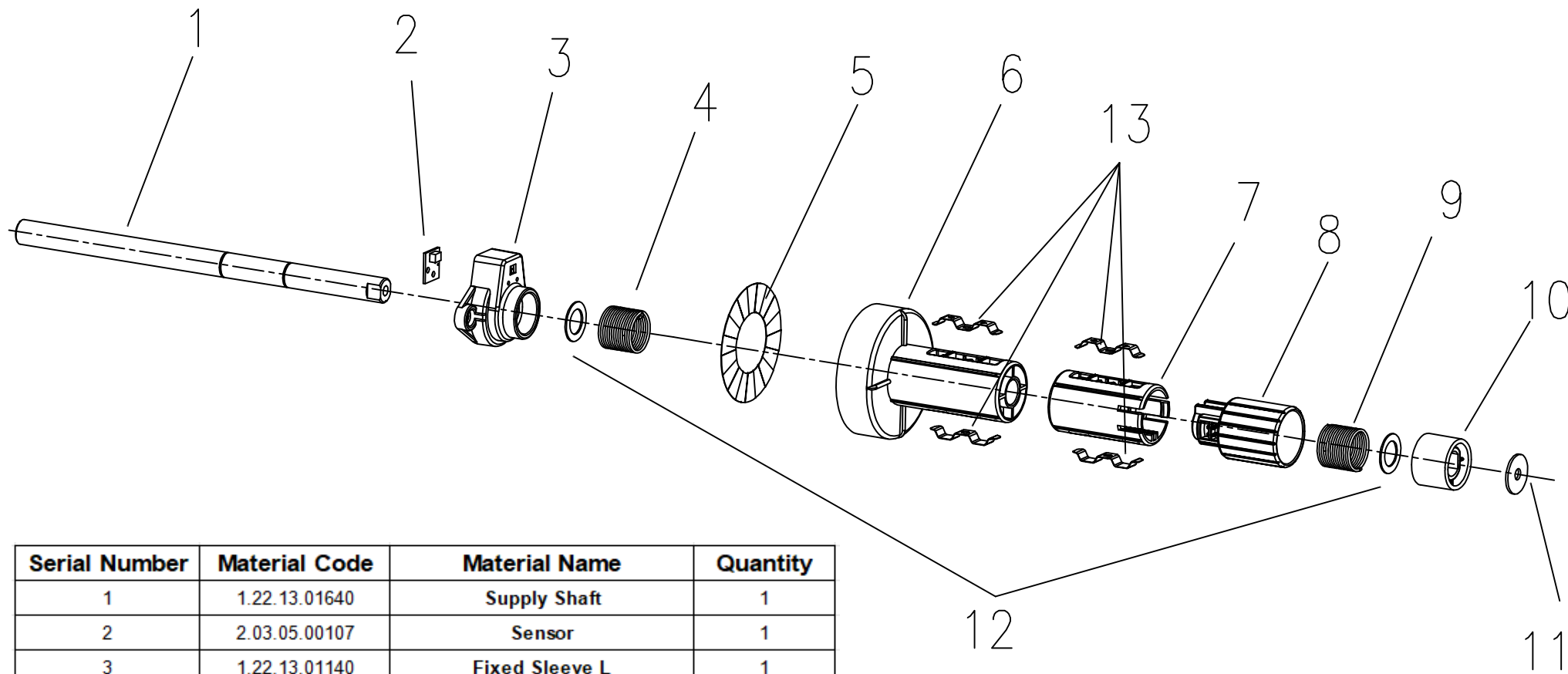
Serial Number	Material Code	Material Name	Quantity
1	1.11.02.00012	Motor	1
2	1.22.13.01370	Motor Mounting Plate	1
3	1.25.01.00076	Motor Gear	1
4	1.22.13.01360	Support Plate	1
5	1.25.01.00077	Recycle Transition Gear	1
6	1.25.01.00078	Recycle Intermediate Gear	1
7	1.24.04.00011	Circlip	1
8	1.25.01.00079	Recycle Gear	1
9	1.24.02.00005	One-way Bearings	1

Face Cover Assembly



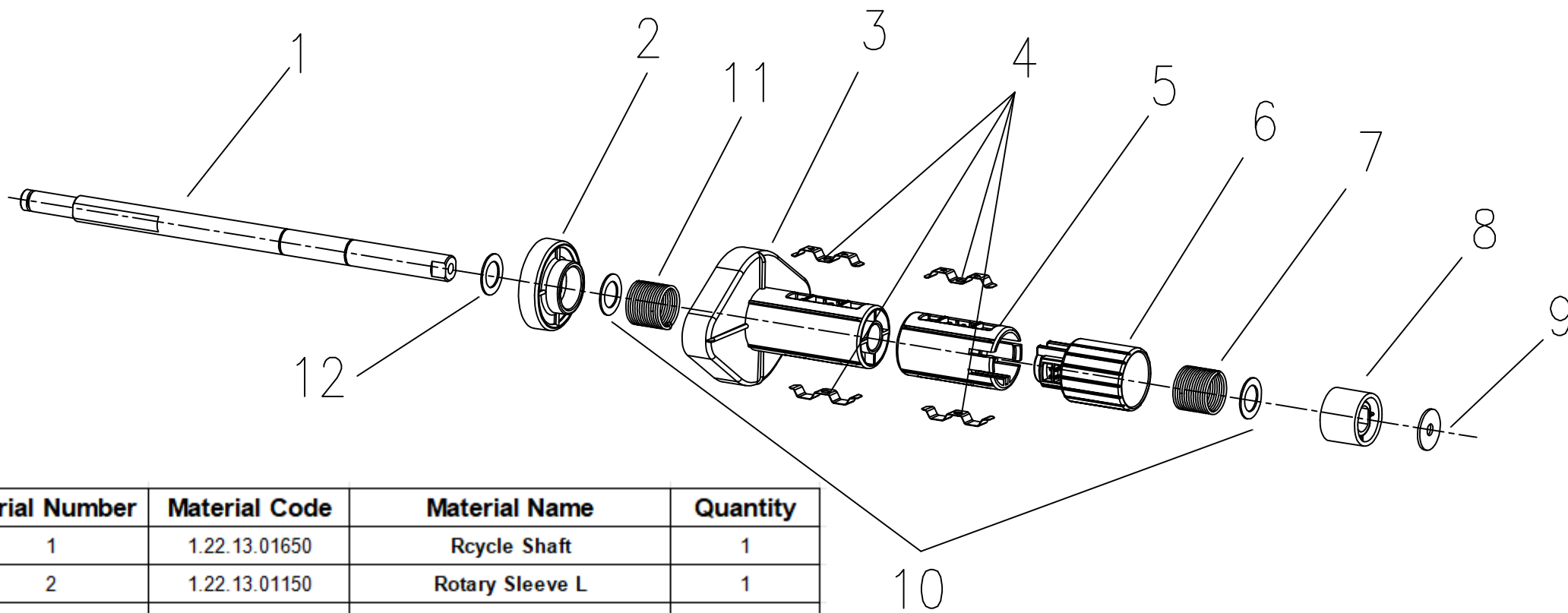
Serial Number	Material Code	Material Name	Quantity
1	1.27.05.00550	Button Panel Label	1
2	1.22.33.01060	Screen Cover	1
3	1.22.33.01070	Sliding Cover	1
4	2.03.03.00031	Cutter Interface Board	1
5	2.03.03.00010	Interface Board	1
6	1.19.01.00295	Paper Inspection Line	1
7	1.19.01.00294	Adapter Cord	1
8	1.19.01.00289	Motor Adapter Cord	1
9	1.22.33.00870	Button	1

# Ribbon Supply



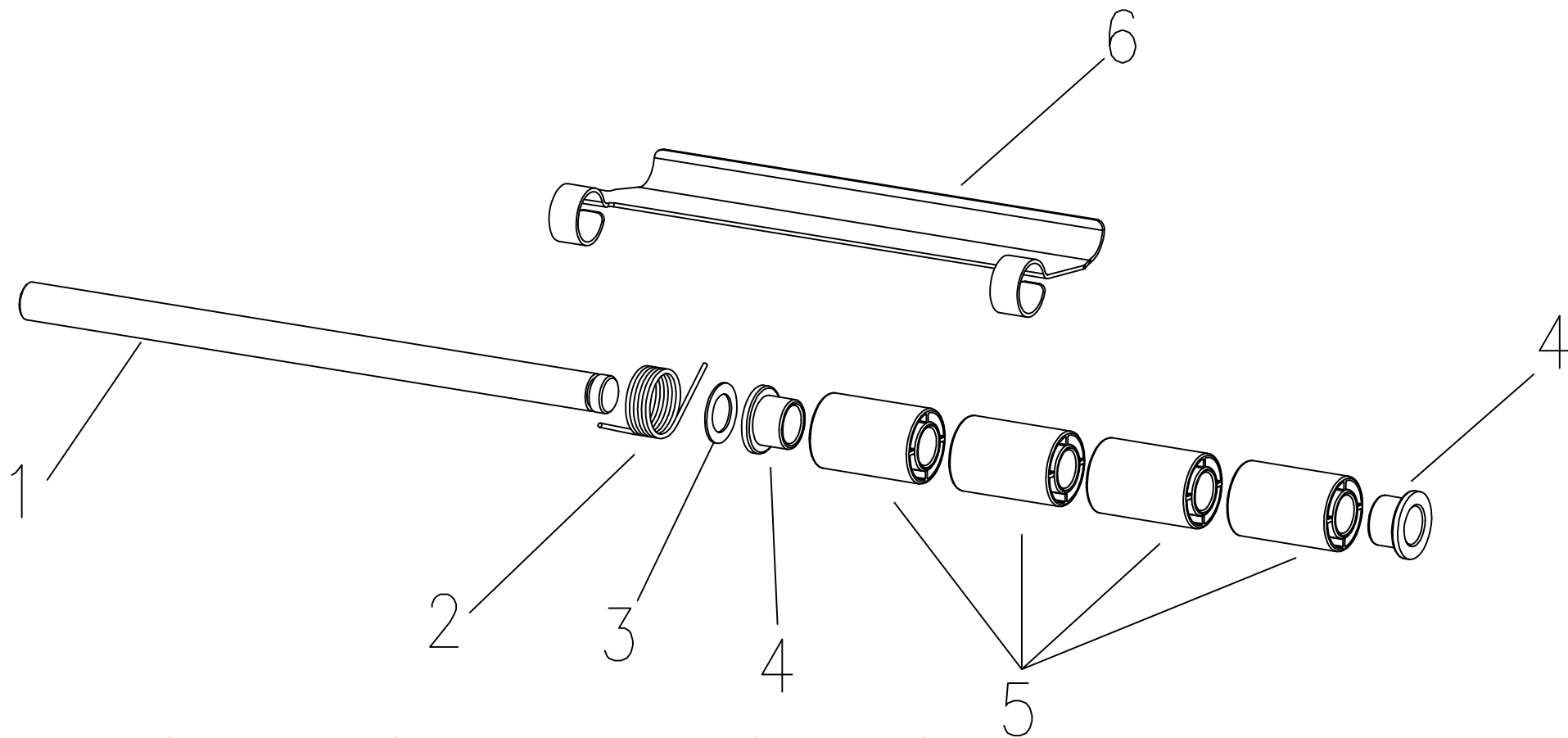
Serial Number	Material Code	Material Name	Quantity
1	1.22.13.01640	Supply Shaft	1
2	2.03.05.00107	Sensor	1
3	1.22.13.01140	Fixed Sleeve L	1
4	1.23.13.00010	Left-handed Sliding Spring	1
5	1.27.05.00222	Rotation Count Label	1
6	1.22.33.01010	Ribbon Supply Rod	1
7	1.22.13.01190	Carbon Ribbon Center Rod	1
8	1.22.33.00940	Supply Adjustment Rod	1
9	1.23.13.00020	Right-handed Sliding Spring	1
10	1.22.13.01160	Rotary Sleeve R	1
11	1.24.04.00018	Flat Pad	1
12	1.24.04.00017	Gasket	1
13	1.22.13.01470	Spring Iron Sheet	4

# Ribbon Recycle



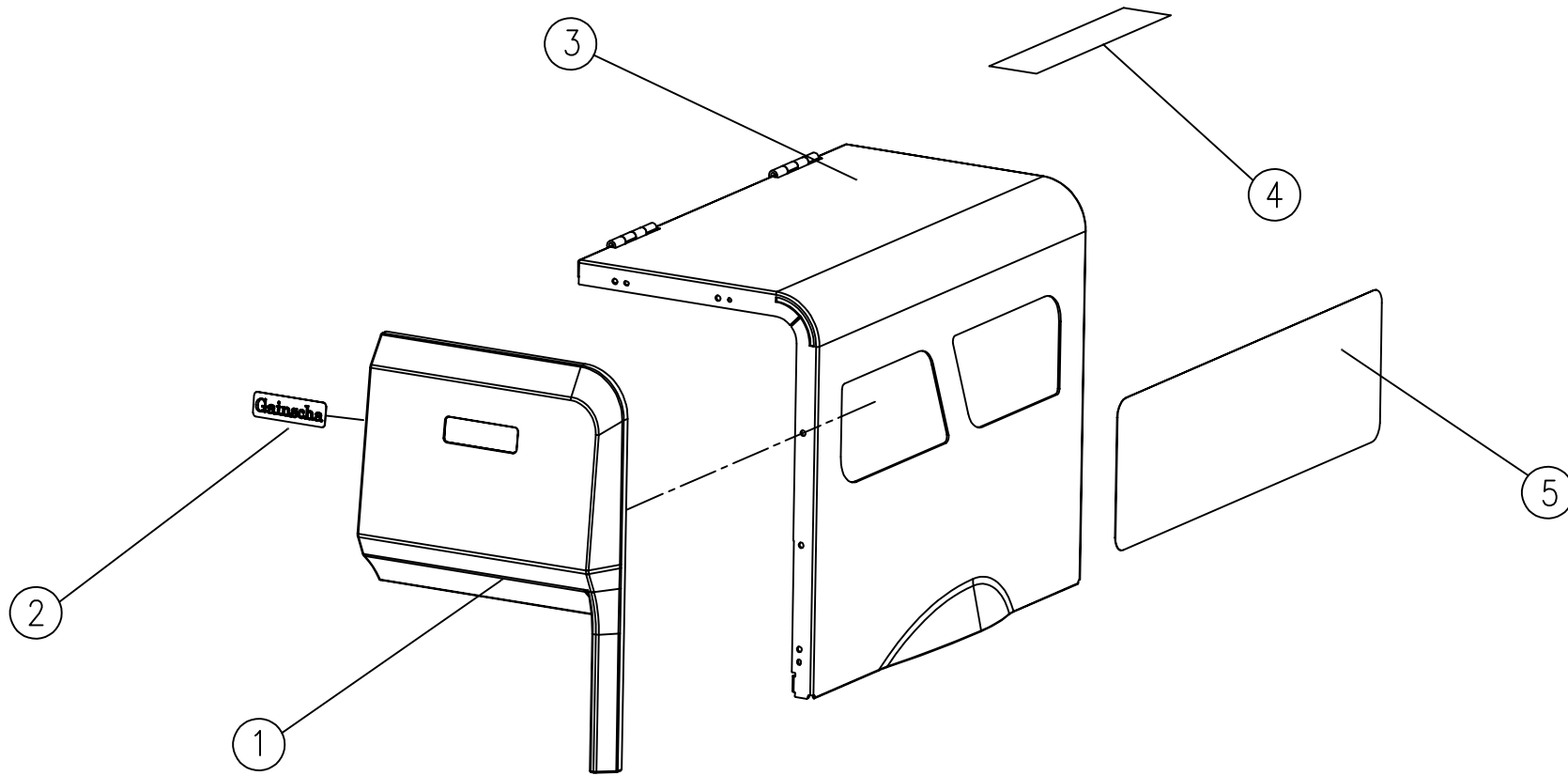
Serial Number	Material Code	Material Name	Quantity
1	1.22.13.01650	Recycle Shaft	1
2	1.22.13.01150	Rotary Sleeve L	1
3	1.22.33.01020	Ribbon Recycle Rod	1
4	1.22.13.01470	Spring Iron Sheet	4
5	1.22.13.01190	Carbon Ribbon Center Rod	1
6	1.22.33.00950	Recycle Adjustment Lever	1
7	1.23.13.00010	Left-handed Sliding Spring	1
8	1.22.13.01160	Rotary Sleeve R	1
9	1.24.04.00018	Flat Pad	1
10	1.24.04.00017	Gasket	2
11	1.23.13.00020	Right-handed Sliding Spring	1
12	1.24.04.00017	Gasket	1

Pressure Plate



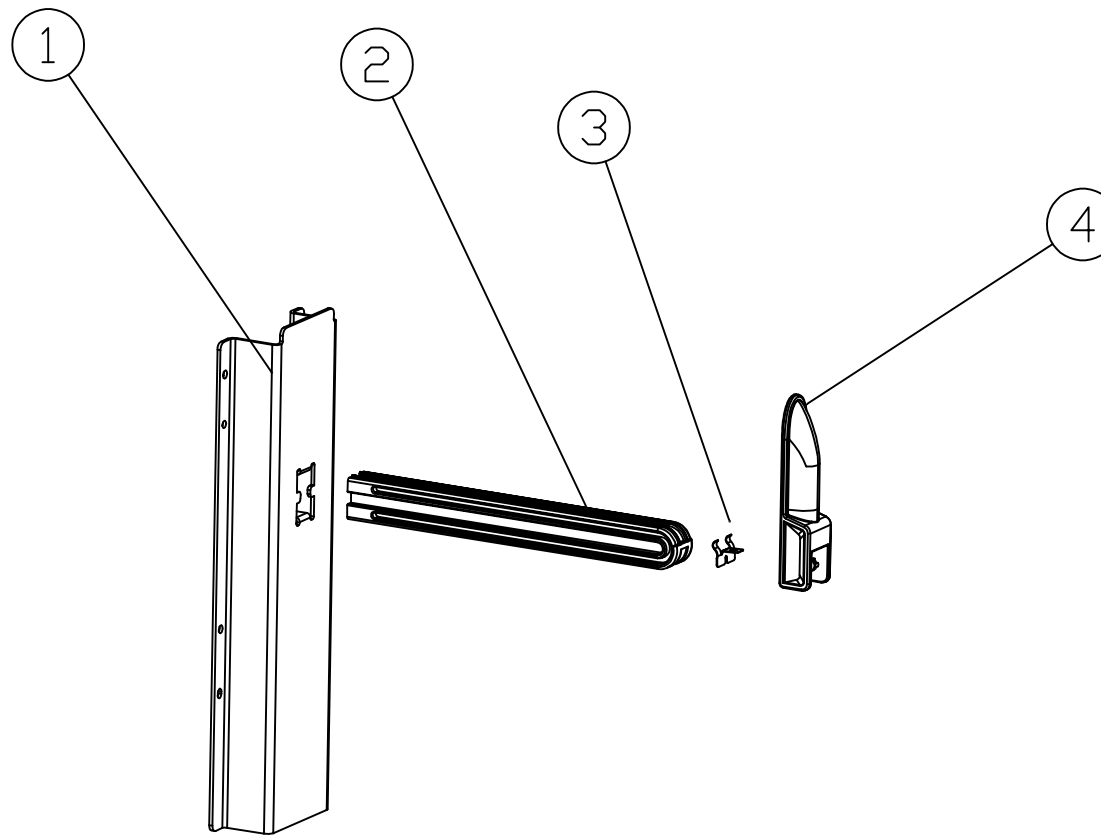
Serial Number	Material Code	Material Name	Quantity
1	1.22.13.01620	Paper Feed Shaft	1
2	1.23.13.00060	Pressure Plate Torsion Spring	1
3	1.24.04.00017	Flat Pad	1
4	1.22.13.01230	Pressure Plate Sleeve	2
5	1.22.13.01220	Paper Guide Column	4
6	1.22.13.01430	Paper Feed Plate	1

Right Flip



Serial Number	Material Code	Material Name	Quantity
1	1.22.13.01080	Face Cover	1
2	1.27.05.00565	Logo Label	1
3	1.2213.01410	Right Cover	1
4	1.27.05.00555	Ribbon Installation Label	1
5	1.27.05.00272	Window Transparent Film	1

Paper Loading



Serial Number	Material Code	Material Name	Quantity
1	1.22.13.01380	Label Mounting Plate	1
2	1.22.13.01540	Label Mounting Shaft	1
3	1.22.13.01480	Loading Paper Block Shrapnel	1
4	1.22.33.00930	Loading Paper Block	1